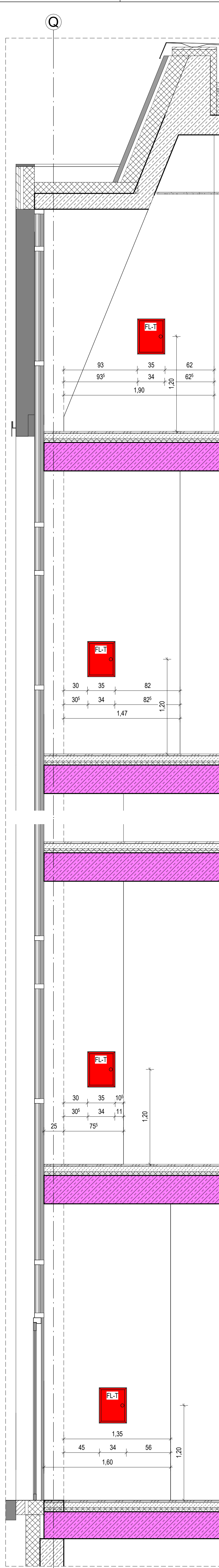
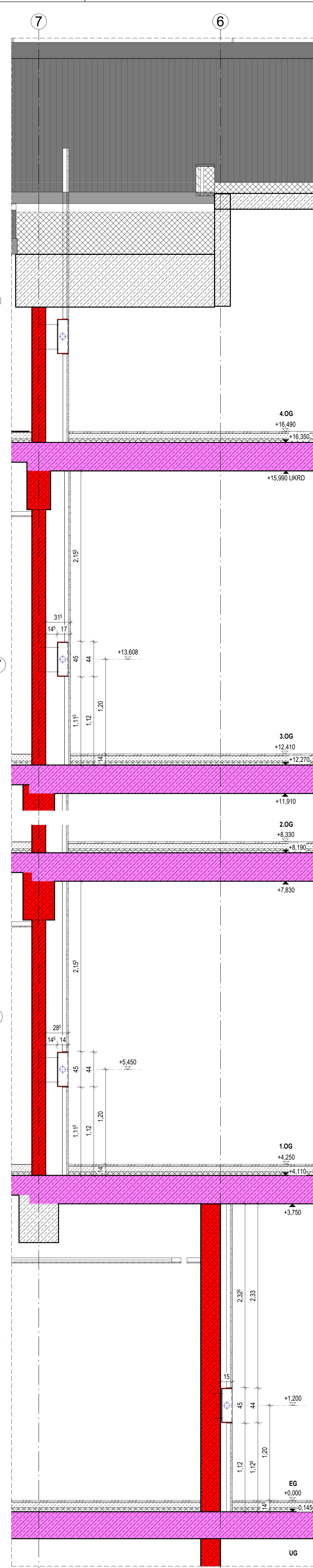


Detail 4.0G TRH A_FL-T

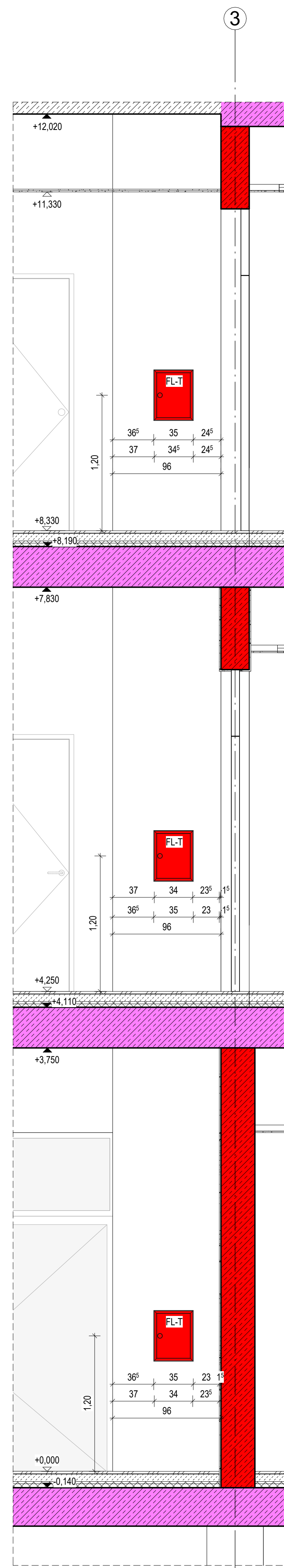
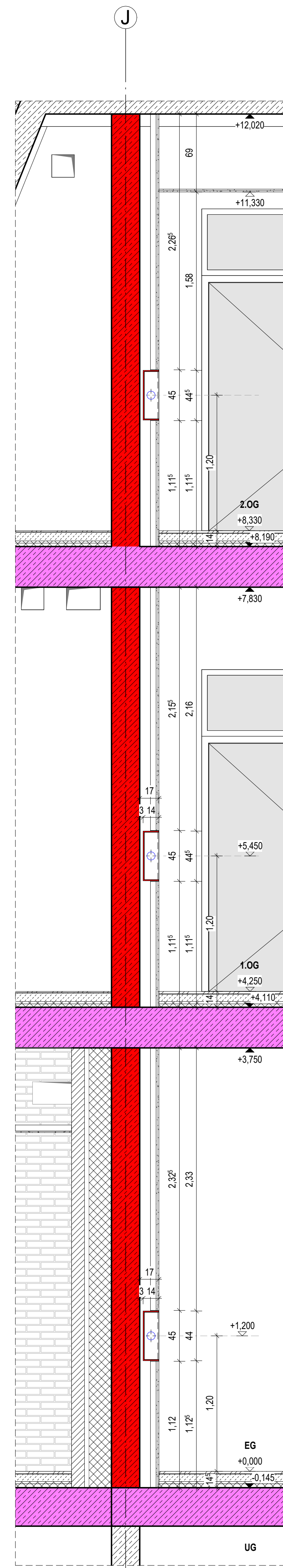
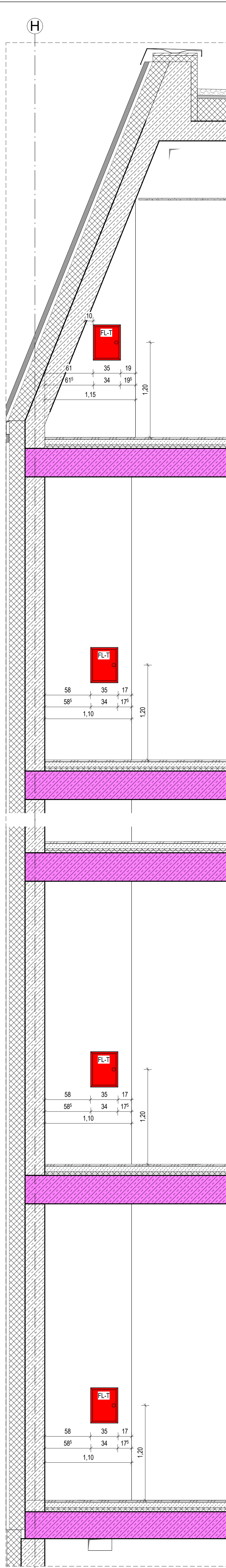
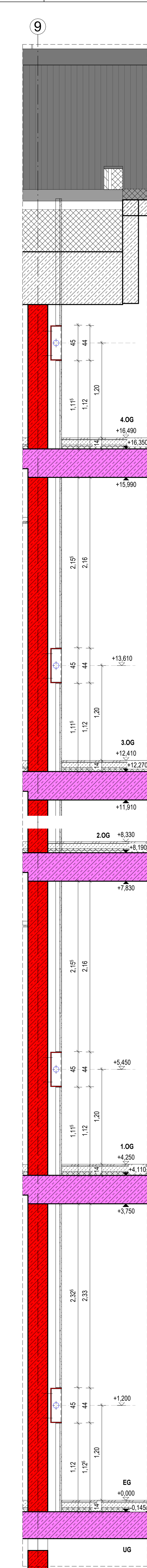
Detail 3.0G TRH A_FL-T

Detail 1.-2.OG TRH A_FL-T

A diagram showing a point charge Q located at a distance a above a horizontal dashed line representing a grounded conducting plane. The charge is represented by a circle with a plus sign and the letter Q inside. A vertical line segment of length a connects the charge to the plane.

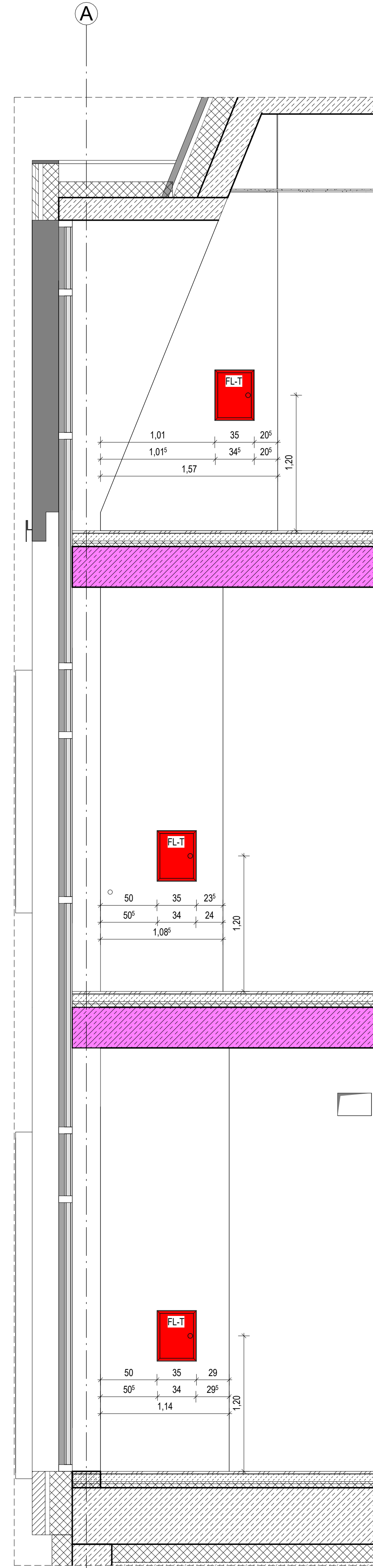
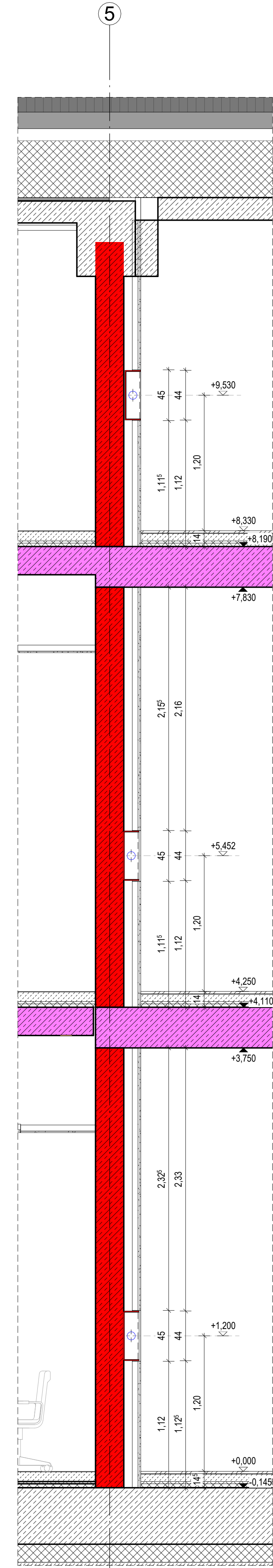


The diagram shows a horizontal chain of 10 vertical bars, representing a polymer backbone. A single vertical line extends downwards from the second bar from the left, connecting to a circle containing the letter 'H', representing a hydrogen atom.



A
Detail 2.OG TRH D_FL-T
M 1:25

Detail 1.OG TRH D_FL-T

[illegible]